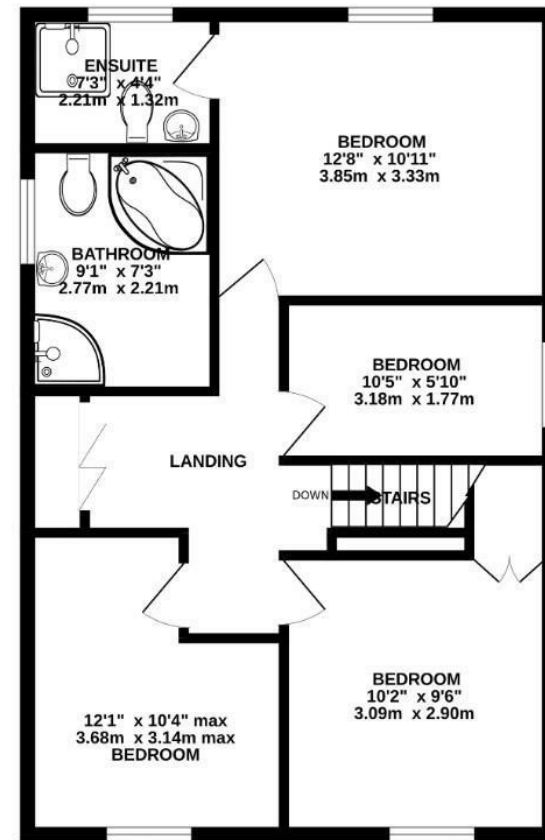
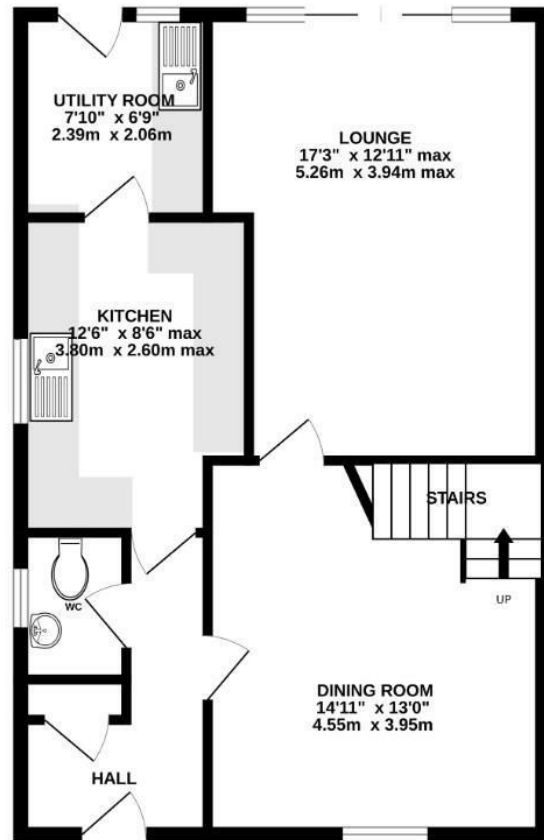


GROUND FLOOR
647 sq.ft. (60.1 sq.m.) approx.

1ST FLOOR
647 sq.ft. (60.1 sq.m.) approx.



TOTAL FLOOR AREA : 1294 sq.ft. (120.2 sq.m.) approx.
Made with Metropix ©2025

Disclaimer

These particulars, whilst believed to be accurate are set out as a general outline only for guidance and do not constitute any part of an offer or contract. Intending purchasers should not rely on them as statements or representation of fact, but must satisfy themselves by inspection or otherwise as to their accuracy. We have not carried out a detailed survey nor tested the services, appliances and specific fittings. Room sizes should not be relied upon for carpets

and furnishings. The measurements given are approximate. No person in this firm's employment has the authority to make or give any representation or warranty in respect of the property.

Daniel Brewer

51 High Street
Great Dunmow
Essex, CM6 1AE

Telephone • 01371 856585
Website • www.danielbrewer.co.uk
E-mail • info@danielbrewer.co.uk



WOODVIEW ROAD, DUNMOW

OFFERS OVER £500,000



WOODVIEW ROAD DUNMOW

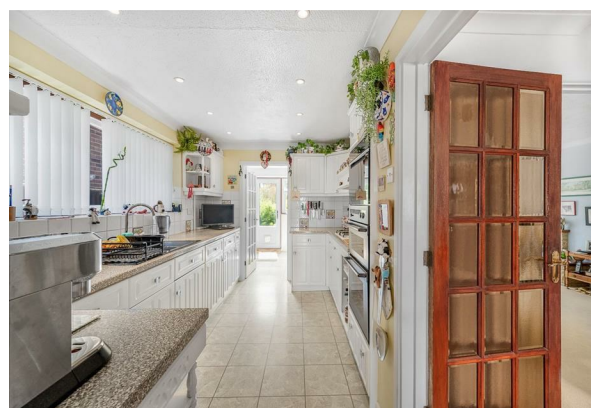
Nestled in the charming area of Woodview Road, Dunmow, Essex, this delightful link detached family home within walking distance to the town centre. The property boasts four well-proportioned bedrooms, making it an ideal choice for families seeking space and functionality.

Upon entering the the entrance hall, you are greeted by two inviting reception rooms, perfect for both relaxation and entertaining guests. The layout of the home promotes a warm and welcoming atmosphere, ensuring that every family member can find their own space. The kitchen is well-equipped, providing a practical area with a door leading to a handy utility room.

The property features en-suite facilities, adding a touch of luxury and privacy to the principle bedroom. With a further family bathroom and ground floor cloakroom, morning routines will be a breeze for the entire household.

Situated on a desirable residential road, this home benefits from being conveniently located near local amenities and transport links. Whether you are looking to enjoy the tranquillity of suburban living or seeking a vibrant community, this property offers the best of both worlds.

Externally there is a generous, well established, rear garden, driveway parking and single garage.





- **Four Bedroom Link-Detached Family Home**
- **Two Reception Rooms**
- **Kitchen & Utility Room**
- **En-Suite Facilities**
- **Family Bathroom & Cloakroom**
- **Generous Rear Garden**
- **Driveway Parking, Single Garage & Carport**
- **Desirable Residential Road**
- **Walking Distance To Town Centre**

Entrance Hall

Entered via front door, door leading to storage cupboard, doors leading to:-

Kitchen

12'5" x 8'6" (3.80 x 2.60)
Window to side aspect, fitted with a range of eye and base level units with working surface over, integrated oven, integrated grill, inset one and half bowl sink and drainer unit with mixer tap over, inset four ring gas hob with extractor fan over.

Utility Room

7'10" x 6'9" (2.39 x 2.06)
Window to rear aspect, partly glazed door to rear aspect leading to rear garden, range of base level units with working surface over, inset sink and drainer unit with mixer tap over, space for washing machine.

Dining Room

14'11" x 12'11" (4.55 x 3.95)
Window to front aspect, stairs rising to first floor landing, doors leading to:-

Living Room

17'3" x 12'11" (5.26 x 3.94)
Patio sliding doors to rear aspect leading to rear garden.

Cloakroom

Opaque window to side aspect, wall mounted wash hand basin, low level W.C.

First Floor Landing

Window to side aspect, storage cupboard, access to loft, doors leading to:-

Bedroom One

12'7" x 10'11" (3.85 x 3.33)
Window to rear aspect, door leading to:-

En-Suite

7'3" x 4'3" (2.21 x 1.32)
Opaque window to side aspect, fitted with a three piece suite comprising glass enclosed shower cubicle with wall mounted shower attachment, low level W.C, wash hand basin with mixer tap over, fully tiled walls, radiator.

Bedroom Two

12'0" x 10'3" (3.68 x 3.14)
Window to rear aspect.

Bedroom Three

10'1" x 9'6" (3.09 x 2.90)
Window to rear aspect.





Bedroom Four

10'5" x 5'9" (3.18 x 1.77)

Window to side aspect.

Family Bathroom

9'1" x 7'3" (2.77 x 2.21)

Opaque window to side aspect, fitted with a four piece suite comprising glass enclosed shower cubicle with wall mounted shower attachment, panel enclosed corner bath, low level W.C, wash hand basin with mixer tap over, partly tiled walls, tiled flooring, radiator.

Rear Garden

The rear garden has been beautifully landscaped and is full of mature trees, shrub borders and flower beds. Directly to the rear of the property is a patio area great for entertaining with the remainder of this section made up of lawn. Steps lead down to a further lawn area.

Driveway Parking & Carport

Suitable for two vehicles.

Single Garage

With up and over door, power and lighting.

